

## Installing RootsMagic from the CD

### This Magic Guide covers:

- A. Installing RootsMagic from the CD
- B. Registering the Program
- C. Installing the RootsMagic Updates
- D. Identifying Which Version of the Software is Installed

### A. Installing RootsMagic from the CD

1. Remove the CD from the RootsMagic package and insert it into the CD/DVD drive of your computer.
2. The Auto Play screen will open up. Click on the option that says "Run Autorun.exe".

#### Windows 7 options



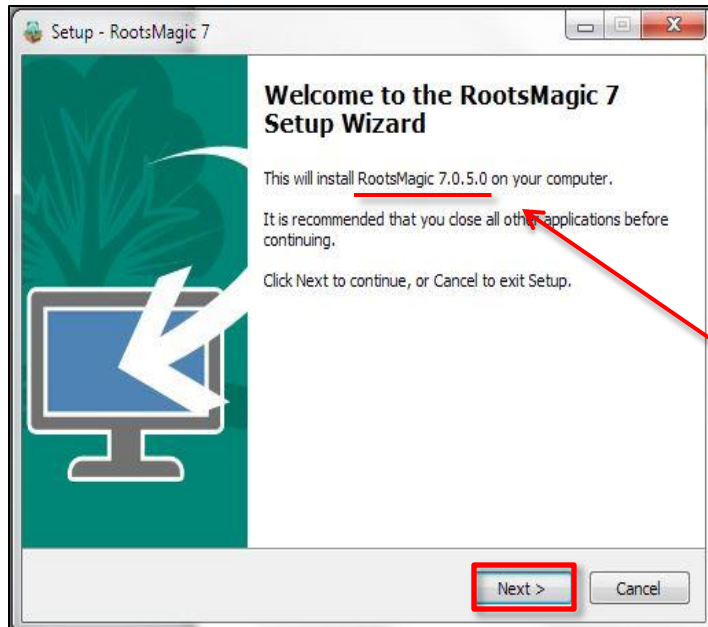
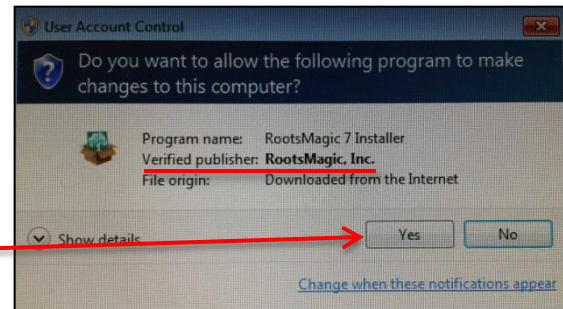
#### Windows 8 Options



3. Click on the first option, "Install RootsMagic" to start the download process.

4. The “User Account Control” screen will open and ask, “Do you want to allow the following program to make changes to your computer?” It is safe, since the publisher is RootsMagic, Inc.

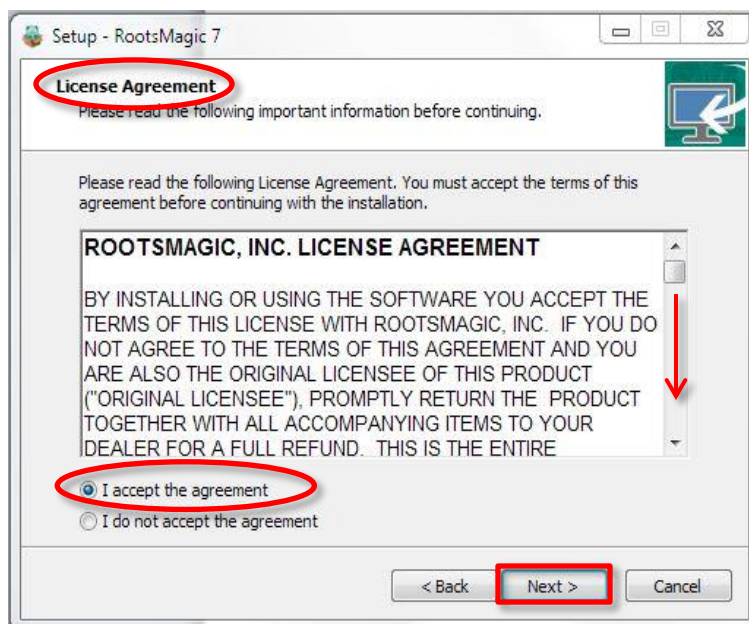
To install the program, click “Yes”.



5. After clicking “Yes” the RootsMagic Setup Wizard will open. At this time, it is recommended that you close all other applications (programs) before continuing.

6. The version number is displayed.

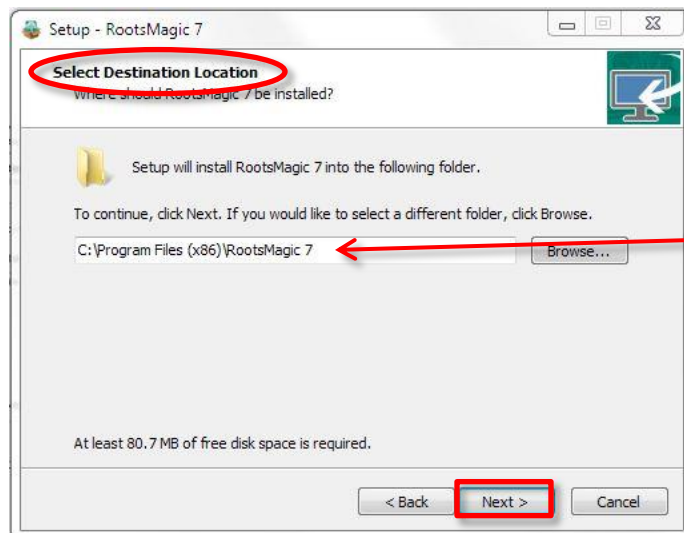
7. Click “Next” to continue.



8. The “License Agreement” screen will open. Use the scroll bar to the right side of the screen to read the License Agreement.

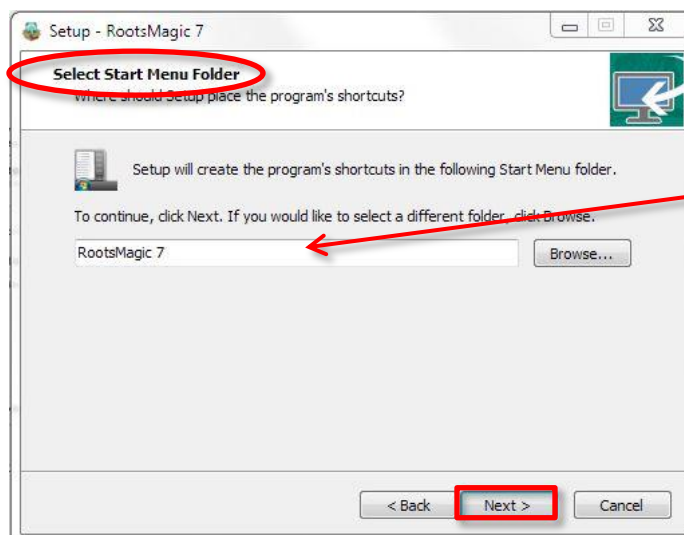
9. To proceed with the download of the RootsMagic program you will need to click on the option that says, “I accept the Agreement.”

10. Click next to continue.



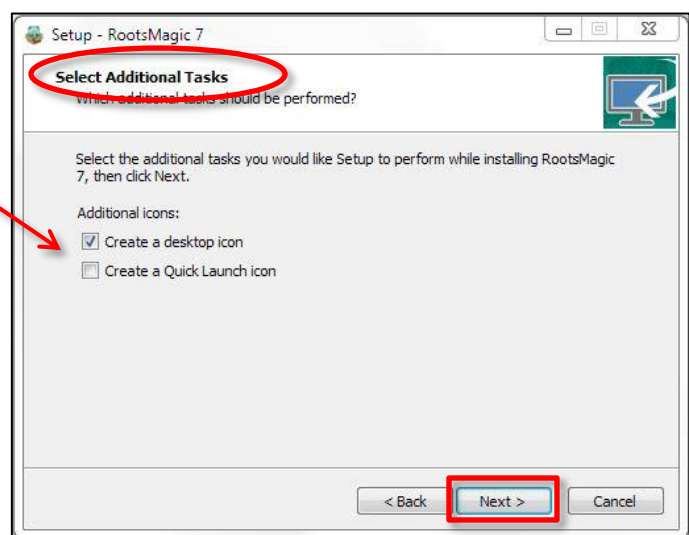
11. The “Select Destination Location” screen will open letting you know that RootsMagic will be installed into the default folder on your computer, which is:  
C:\Program Files (x86)\RootsMagic 7

12. Click next to continue.

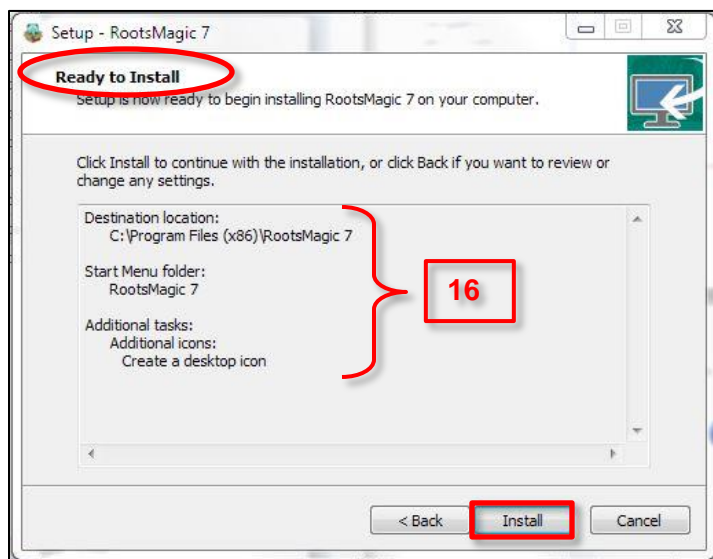


13. The “Select Start Menu Folder” screen lets you select the “Start Menu” folder for RootsMagic. Accept the default folder by clicking “Next”.

14. The “Select Additional Tasks” screen asks if you want to create a desktop icon and/or a quick launch icon.



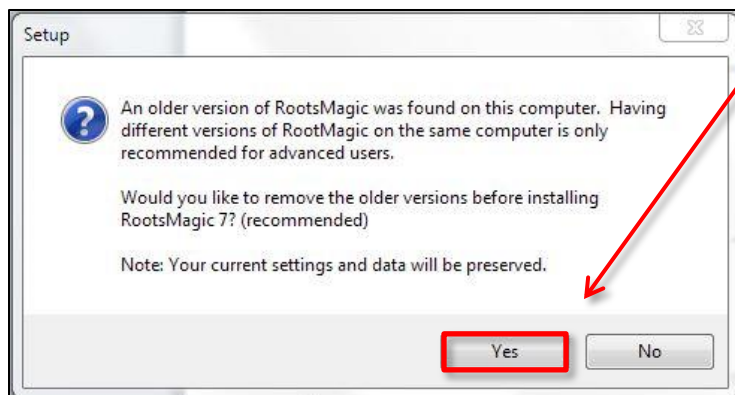
15. Make your selections and click “Next” to continue.



16. You are now ready to install your RootsMagic program. The “Ready to Install” dialog screen will show you where the program will be installed (Destination Location), the folder name on the “Start Menu”, and the “Additional Tasks” that you selected.

17. Click “Install”.

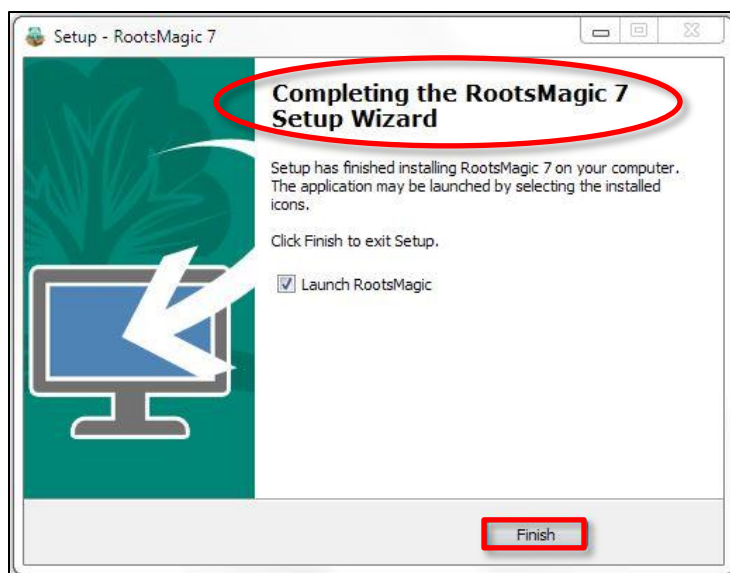
18. If RootsMagic detects older versions of the program on your computer, this window will appear. Click “**Yes**” to delete older versions of RootsMagic. Click “**No**” to keep the older versions. Generally, we recommend that you delete older versions.



**Note: XP or earlier computers would allow you to store the database files in the Program Folder. Make sure you relocate them before uninstalling older versions. Otherwise, the database will be deleted along with the program files. Vista and newer computers do not have this issue.**

**Also, it is wise to make a backup of your database in the previous version before opening in it a newer version.**

19. When the RootsMagic program is installed the “Completing the RootsMagic 7 Setup Wizard” screen will reopen. Click “Finish” to finalize the process and close the Wizard.





## B. Registering the Program



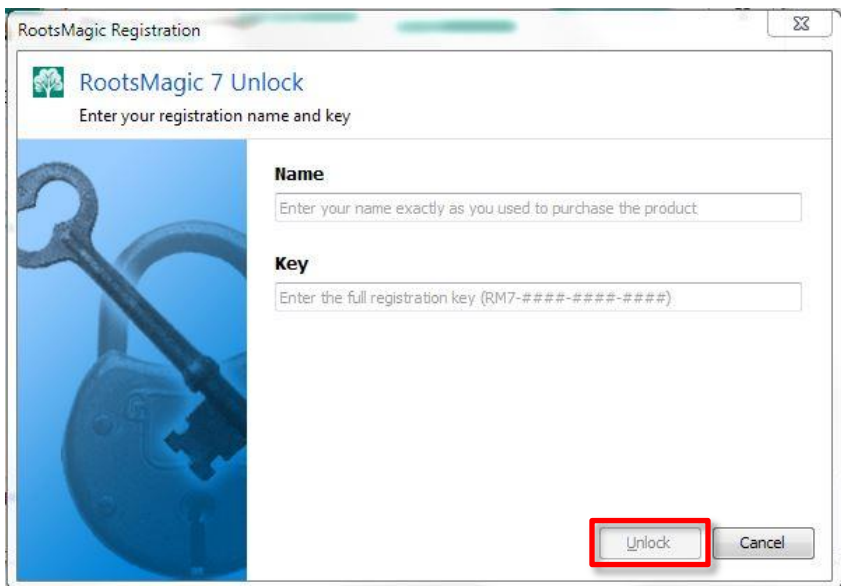
1. After clicking “Finish” you will be taken to the “Welcome to RootsMagic” screen. On this screen you will be given two options.

- RootsMagic 7 – Full Registered Version
- RootsMagic Essentials – Free Version.

2. Select the option that says “Full Registered Version”.

3. Enter your name, and the registration key found inside the RootsMagic CD case.

4. Once you enter the key, the “Unlock” button will be active. Click “Unlock”.



5. The “Register RootsMagic” screen will open. The advantages of registering are listed on the screen. You will be given three registration options:

- Registered Online
- Register by Phone
- Register Later

6. Choose your option and click “Continue”.

***In this example, Register Online is selected.***



RootsMagic

Home Products News Downloads Store **Support** Community Learn Company Contact Us

Home > Support > Register Your Software

**Register Your Software**

Registering your software provides technical support and discounts on our software. We will also contact you with important information about our software. Plus it helps us find your registration key if you happen to lose it. Just fill out the form and click the "Register" button.

Product: RootsMagic 7

Registration Key: RM7-0X0X-1Y1Y-2Z2Z

First Name: Jane Doe

Last Name:

E-mail:

Verify E-mail:

Address:

City:

State/Province:

ZIP/Postal Code:

Country: United States

Phone:

**Register**

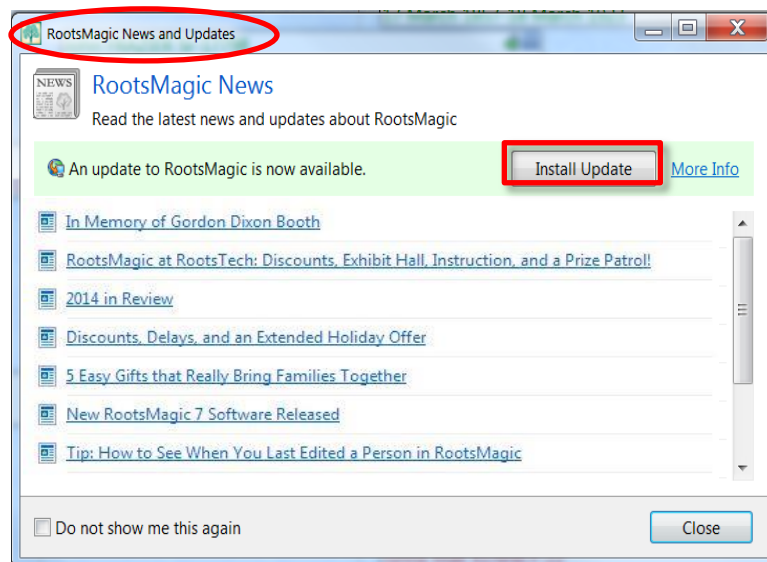
7. Fill in the "Register Your Software" form.

***It's important to register your software. We keep your registration key on file. If you lose your key you can request it by going to the "Support" heading on our website and selecting "Request a Lost Product Key", or by clicking this link:***

***<http://rootsmagic.com/Recover-Key/>***

## C. Installing the RootsMagic Updates

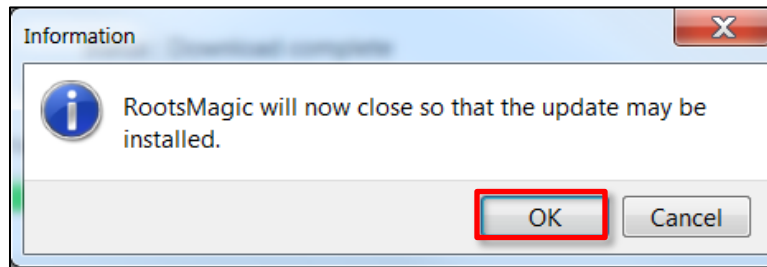
1. After you register, you will be taken into the RootsMagic program. The first screen that you will see is "RootsMagic News and Updates".



*Watch this screen for notices regarding FREE version updates.*

2. When available, click on the "Install Update" button to update the software to the most current version.

3. When you click on the “Install Update” button the information screen will open up letting you know that RootsMagic will now close so that the update can be installed.



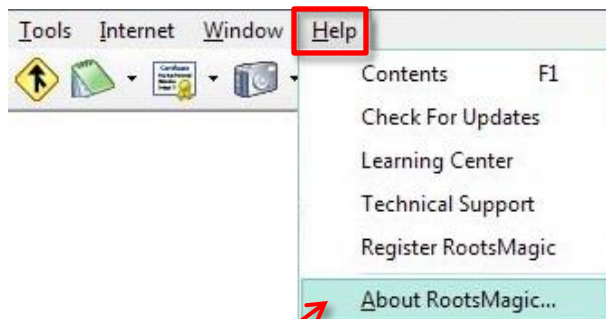
4. Click “OK”.

5. Another screen will open up asking, “Do you want the following program to make changes to your computer?”

6. Click, Yes”.

7. The download will begin.

#### **D. Identifying Which Version of the Software is Installed**



1. When the update has finished installing, you will be taken back to the “RootsMagic News and Update screen”. Close the window.

2. If you want to check to see what version of RootsMagic you are using, click on the “Help” menu at the top of your RootsMagic screen.

3. In the drop down menu, click on the option that says, “About RootsMagic”.

4. A new window will open. In the center of the screen, you will see the version number of the software you are currently using.

5. Click “Close” to close the window and return to RootsMagic.

